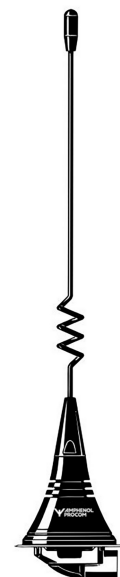


Collinear 2 dB Mobile Antenna for the UMTS Band (1900 - 2200 MHz)

DESCRIPTION

- > Mobile antenna for the UMTS band (1900 – 2200 MHz).
- > Collinear, stainless steel whip.
- > 2 dB gain compared to a ¼ λ whip.
- > Stainless steel LX-mount – professional quality in elegant and smooth design.
- > \Especially suited for roof-mounting.
- > Provided with FME-connection (supplied without cable).
- > Bendable section in mount for adjustment of whip (tiltable 15° by hand).
- > Installation with access from the outside only (requiring an 18 mm dia. hole).



SPECIFICATIONS

Electrical	
Model	MU 2404/UMTS-LX
Frequency	UMTS band (1900 - 2200 MHz)
Antenna Type	Collinear mobile antenna
Max. Input Power	25 W
Polarisation	Vertical
Impedance	50 Ω
VSWR	≤ 2.0 @ f. res.
Bandwidth	≥ 200 MHz @ VSWR ≤ 2.25
Gain (EIA RS-329-1)	2 dB
Mechanical	
Materials	Whip : Black-chromed stainless steel Black-chromed brass Mount : Stainless steel Cu-nite brass Environment-proof plastics
Cable	FME-cable to be ordered separately
Installation Torque	3.5 Nm max.
Colour	Black
Height	Approx. 180 mm / 7.09 in.
Weight	Approx. 0.034 kg / 0.07 lb.
Mounting	18 mm dia. hole

ORDERING

Model	Product No.
MU 2404/UMTS-LX	130001274

INSTALLATION

The LX-mount is especially suited for roof-mounting. It is recommended to mount the antenna at the centre of the roof to ensure the best omnidirectional coverage. Mounting can take place in an 18 mm dia. hole with access from the outside only.

When cleaning the car in car-washing machines, the whip should be removed – a 9 mm fork spanner can be used. After wash, the whip is refitted and tightened lightly with the spanner.

The mount is equipped with a bendable section ($\pm 15^\circ$) to make it possible to adjust the antenna to an upright position.

PLEASE NOTE

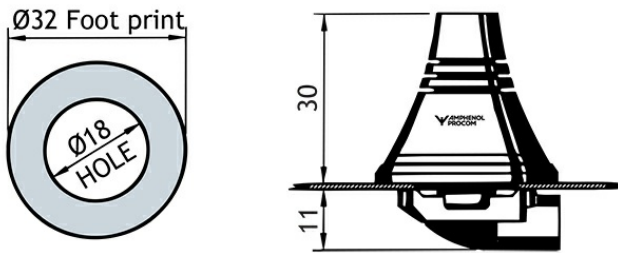
When tightening the revolving nut (see picture 4), special care must be taken to keep the spanner in the correct position.

3. TUNING

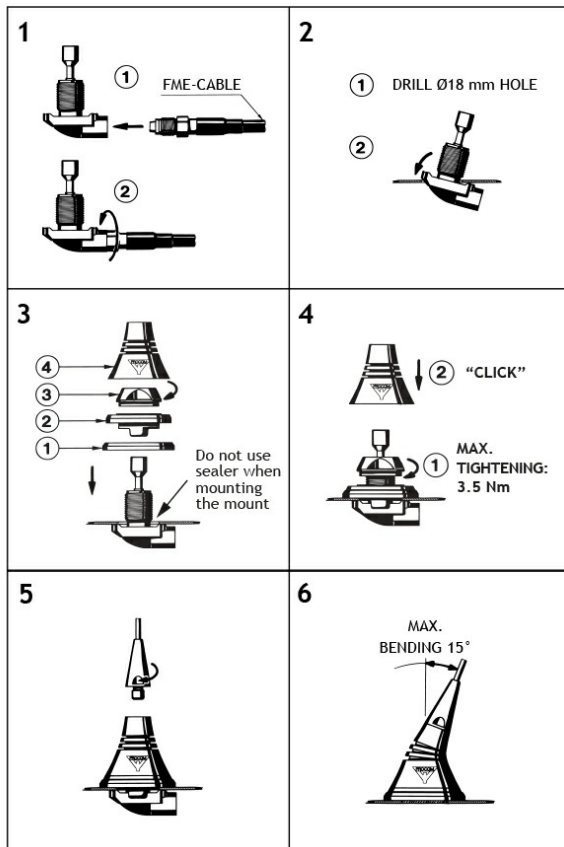
The antenna is delivered factory-tuned and requires no further tuning.

1. INSTALLATION DIMENSION

LX-MOUNT



2. INSTALLATION STEPS



Do not use sealer on rubber gasket or other places.

