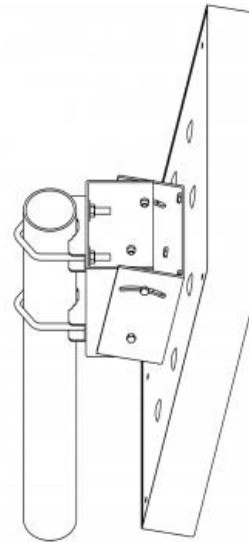


Mast mounting bracket for vertical or horizontal supporting mast tube

DESCRIPTION

- Using the PATCH-MAMO mast mounting bracket, PCPO xH/TETRA/... and PLPO xH/TETRA/... can be mounted on any kind of vertical or horizontal supporting mast tube as long as the outer diameter of the tube is within 27 - 54 mm.
- The PATCH-MAMO is a lightweight mounting bracket made of non-corrosive aluminium.
- The accompanying U-bolts and nuts are made of stainless steel.



SPECIFICATIONS

Electrical	
Application	Clamp for mounting on vertical or horizontal mast tubes with 27 - 54 mm diameter
Mechanical	
Colour	Metallic Silver
Weight	Approx. 0.558 kg / 1.23 lb.
Mounting	On 27 - 54 mm dia. mast tube

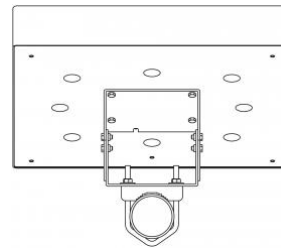
ORDERING

Model	Product No.
PATCH-MAMO	100000447

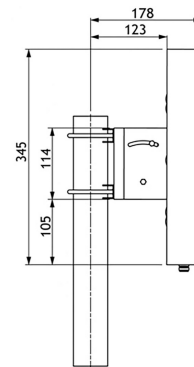
MOUNTING DETAILS

Tilt adjustable from +5° / -30°.

TOP VIEW



Mounting via U-bolts.



HORIZONTAL MOUNTING

