

¼ λ Mobile Rubber Antenna for the 160 MHz Band

DESCRIPTION

- High-flexibility rubber whip with cast-in steel-wire radiating element.
- Ideal where the whip may be exposed to mechanical shock or severe deflection when driving under low objects.
- Stainless steel Z-mount with ball-joint and wing screw whip-fastening system.
- Simple mounting exclusively with access from the outside.
Models with roof thickness from 2 mm to 7.5 mm mounting from the inside.
- Choice between two connection principles:
 - Z-mount: FME-connection (supplied without cable).
 - ZP4-mount: Permanently attached 4 m cable terminated with FME-connector.



SPECIFICATIONS

| Electrical | |
|--------------------------|---|
| Model | MH 4-Z |
| Frequency | Tunable by cutting within : 144 - 175 MHz (Also applicable : 175 - 225 MHz) |
| Antenna Type | ¼ λ mobile whip antenna |
| Max. Input Power | 150 W |
| Polarisation | Vertical |
| Impedance | 50 Ω |
| VSWR | ≤ 1.3:1 @ f.res. |
| Bandwidth | ≥ 15 MHz @ VSWR ≤ 2.0 |
| Gain (EIA RS-329-1) | 0 dB |
| Mechanical | |
| Materials | Whip : Multicore steel wire moulded in elastomer Chromed brass Mount : Chromed brass Weather- and shockproof plastics Stainless steel |
| Installation Torque | 7.5 ±1 Nm |
| Colour | Black |
| Height | Approx. 490 mm / 19.29 in. |
| Weight | Z-version : Approx. 200 g / 0.44 lb. ZP4-version : Approx. 350 g / 0.77 lb. |
| Mounting | 21 mm dia. hole (For roof thicknesses 2 mm up to 7.5 mm mounting hole should be 22 mm dia.) |
| Mounting Plate Thickness | Max. 2.0 mm (Models up to 7.5 mm on request) |

ORDERING

| Model | Product No. | Description |
|----------|-------------|--|
| MH 4-Z | 130000763 | Z-mount with FME-system |
| MH 4-ZP4 | 130000766 | ZP4-mount with 4 m cable and FME-connector |

THE WHIP IS COMPATIBLE WITH ALL BELOW MOUNTS

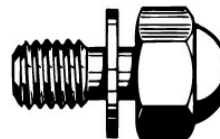
Z-Mount



ZP4-Mount



Hat screw option:



For antenna delivered with hat screw instead of wing screw add a K to the antenna designation.

INSTALLATION

This antenna is provided with type Z-mount. The whip is fastened to the mount by means of our standard ball-joint and wing screw system. The adjustable ball-joint ensures that the whip can always be mounted in a vertical position independent of the angle of the installation spot.

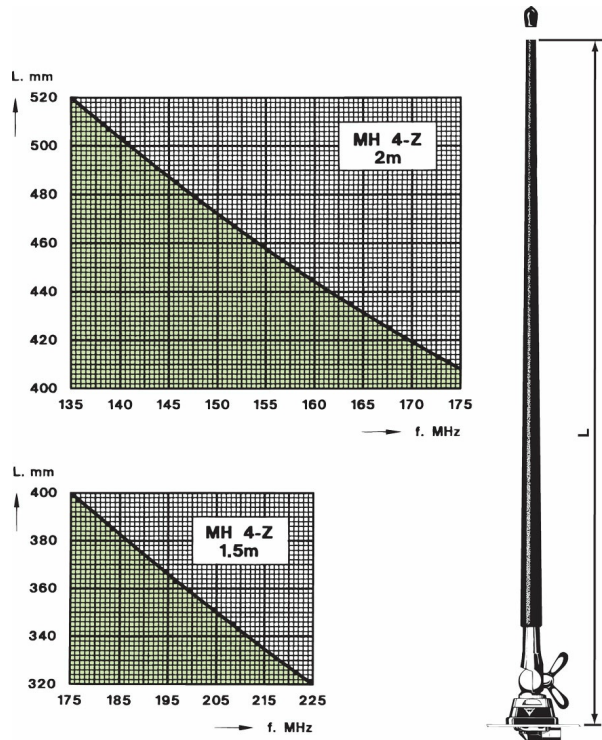
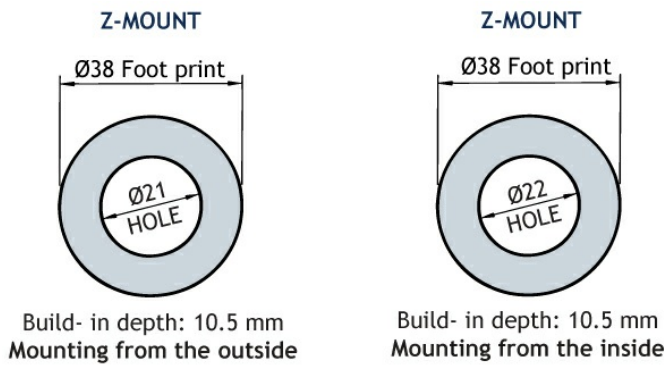
The Z-mount is particularly well suited for mounting on car-roofs because of its ability to be installed exclusively with access from the outside. The Z-Mount for roof thickness from 2 mm to 7.5 mm must be mounted from the inside.

However, the antenna can be installed anywhere on the car, as the Z-mount is equally well suited for mounting on e.g. trunk or wing.

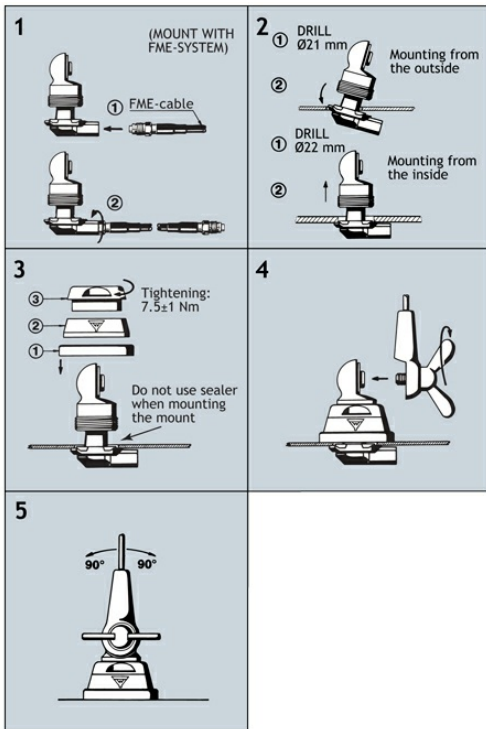
3. TUNING

The antenna should always be tuned using an SWR-meter. The cutting diagrams below serve as a guide for this procedure.

1. INSTALLATION DIMENSION



2. INSTALLATION STEPS



Do not use sealer on rubber gasket or other places.

