

## 18 element Yagi 870-960 MHz

### DESCRIPTION

An 18-element UHF Yagi antenna for Broadcast, TETRA and Cellular communications applications utilizing Jaybeam's "Parabeam" slot radiator feed design to achieve higher directivity than comparable models. Produced to the highest quality standards, these robust antenna designs will ensure reliable operation in harsh environmental conditions.

- Former Jaybeam brand product.

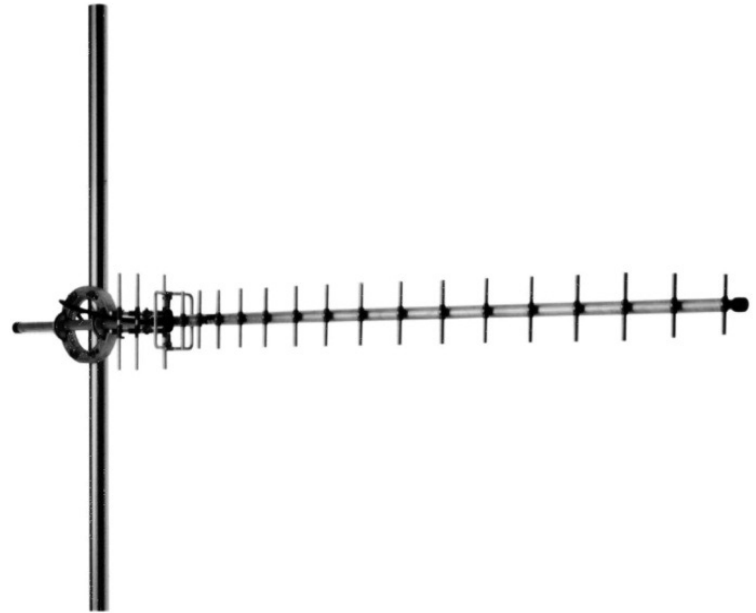
### SPECIFICATIONS

Electrical	
Frequency	870 - 960 MHz
Max. Input Power	150 W
Polarisation	Linear (Vertical or Horizontal)
3 dB Beamwidth, E-Plane	23 °
3 dB Beamwidth, H-Plane	25 °
Impedance	50 Ω
Gain	14.4 dBd (16.6 dBi)
VSWR	< 1.5:1
Front-To-Back Ratio	> 20 dB
Antistatic Protection	All metal parts DC-grounded (Connector shows a DC-short)
In iBWave	Yes

Mechanical	
Connection(s)	N(f) on 3m RG213/U cable
Materials	Boom, 25 mm dia., aluminium Elements, 10 mm dia., aluminium balun, "Parabeam" slot radiator
Length	2000 mm / 78.74 in.
Wind Load	135 N (160km/h)
Weight	2.7 kg / 5.95 lb
Mounting Bracket	3202078/68 + 0900174/00 (Ordered Separately)
Alternate Mounting Bracket	3202063/68 + 0900174/00 or 3202032/68 + 0900174/00 (Ordered Separately)

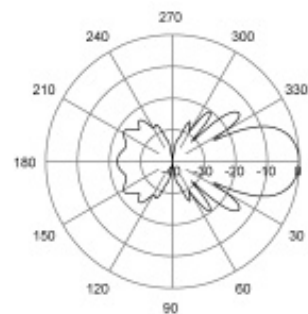
### ORDERING

Model	Product No.	Frequency
18 element Yagi 870-960 MHz	7176890	870 - 960 MHz
Cross clamp	3202063/68	
Increasing sleeve 1"-1-29/32"	0900174/00	
Cross clamp	3202032/68	
Fixed norstel / coupler clamp (cross clamp)	3202078/68	
Increasing sleeve 1"-1-29/32"	0900174/00	



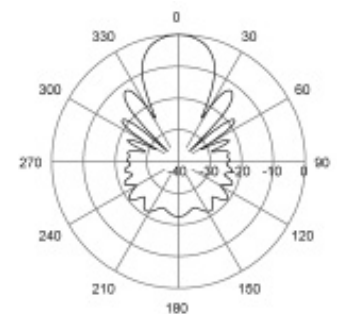
### DIAGRAM

#### RADIATION PATTERNS



E-Plane | 915 MHz

#### RADIATION PATTERNS



H-Plane | 915 MHz

