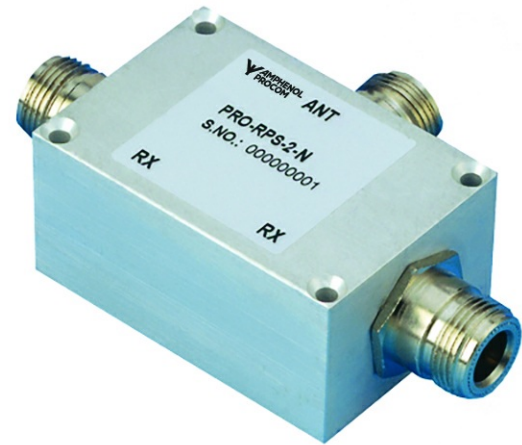


2-Channel Rx Power Splitter

DESCRIPTION

- Low power, compact 2-channel power splitter/combiner.
- The splitter covers the frequency range from 50 – 1000 MHz.
- Almost no ripple in loss and isolation over the entire frequency range.



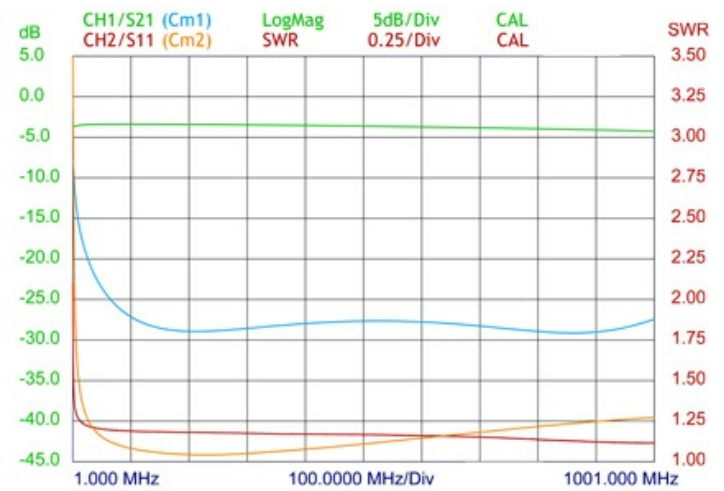
SPECIFICATIONS

Electrical	
Model	PRO-RPS-2-N
Frequency	50 - 1000 MHz
Max. Input Power	2 W
Insertion Loss	< 4.2 dB
Impedance	50 Ω
Isolation between outputs	> 20 dB
VSWR	< 1.3:1
No. of channels	2
Mechanical	
Connection(s)	N(f)
Dimensions	99 x 39 x 28 mm / 3.89 x 1.53 x 1.10 in.
Weight	Approx. 0.15 kg / 0.33 lb.
Mounting	3.2 mm / 0.12 in. dia. countersunk (4 holes)
Environmental	
Operating temperature range	-30 °C to +60 °C

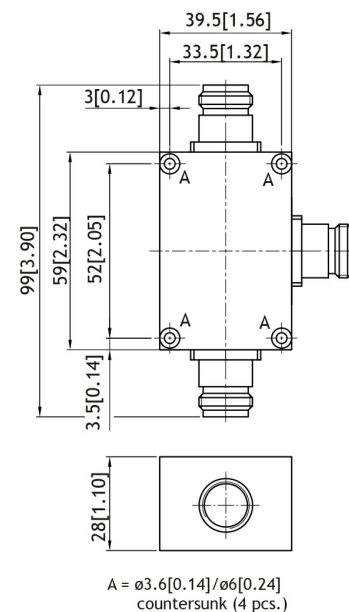
ORDERING

Model	Product No.
PRO-RPS-2-N	210000599

INSERTION LOSS & ISOLATION



MOUNTING DETAILS



All dimensions are given in mm [in.]

