

Outdoor Linearly Polarized low profile Antennas for mounting on Ceiling or Mast

DESCRIPTION

- Low-profile antenna for the 380 - 470 MHz band.
- PLPO/TETRA/... is a patch antenna for outdoor use.
- Covers approx. 50 MHz with a radiation of 7 dBi.
- The antenna is carefully sealed with a discreet cover.
- The connector is placed at one side to enable mounting closed to a wall.
- Including wall mounting bracket. PATCH-MAMO and PATCH/WAMO to be ordered separately.



SPECIFICATIONS

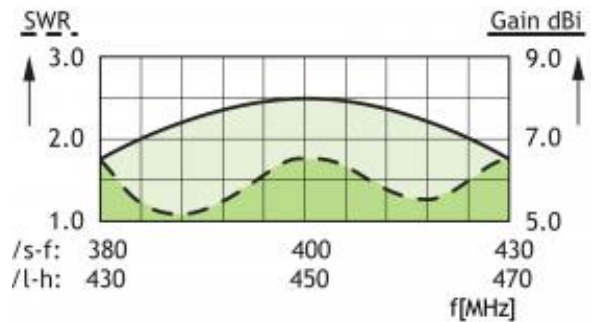
Electrical			
Model	PLPO/TETRA/s-f	PLPO/TETRA/l-h	PLPO/TETRA/s
Frequency	380 - 430 MHz	430 - 470 MHz	380 - 410 MHz
Antenna Type	Linearly polarized patch antenna		
Max. Input Power	100 W		
Polarisation	Vertical		
3 dB Beamwidth, E-Plane	80 °		
3 dB Beamwidth, H-Plane	80 °		
Impedance	50 Ω		
Gain	4.8dBd / 7dBi		
VSWR	< 2.0:1	< 2.0:1	< 1.6:1
Front-To-Back Ratio	21 dB	17 dB	19 dB
Antistatic Protection	All metal parts DC-grounded (Connector shows a DC-short)		
HCM Code(s)	HCM040EA20, 040EA10		
In iBwave	Yes		

Mechanical	
Connection(s)	N(f)
Materials	Cover : ABS (white) Chassis : Aluminium
Colour	Marine white
Dimensions	Approx. 345 x 345 x 60 mm / 13.58 x 13.58 x 2.36 in.
Wind Load	173 N (160km/h)
Weight	Aprox. 2.3 kg / 5.07 lb.
Mounting	For mounting on wall - 5 mm dia. (three holes) (see mounting details) or mast on 40 - 55 mm / 1.57 x 2.17 in. dia. mast tube.

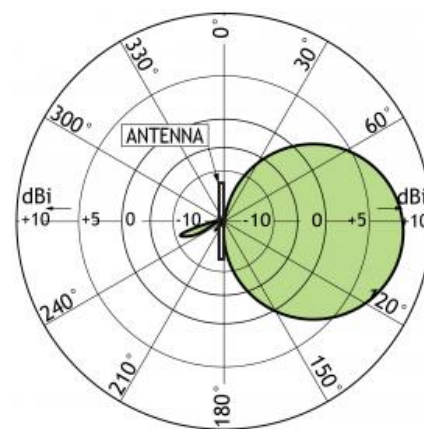
ORDERING

Model	Product No.	Frequency
PLPO/TETRA/s-f	100000424	380 - 430 MHz
PLPO/TETRA/l-h	100000446	430 - 470 MHz
PLPO/TETRA/s	100000476	380 - 410 MHz
Accessories		
PATCH-MAMO	100000447	
PATCH-WAMO	100000511	

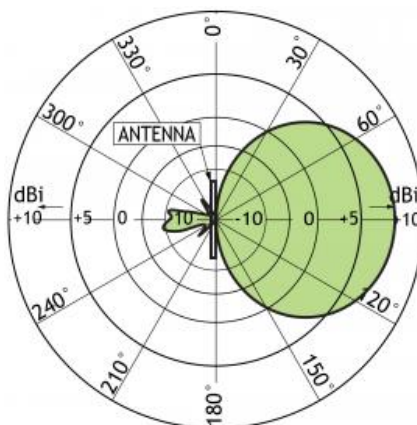
MULTI-PURPOSE MOUNTING BRACKET



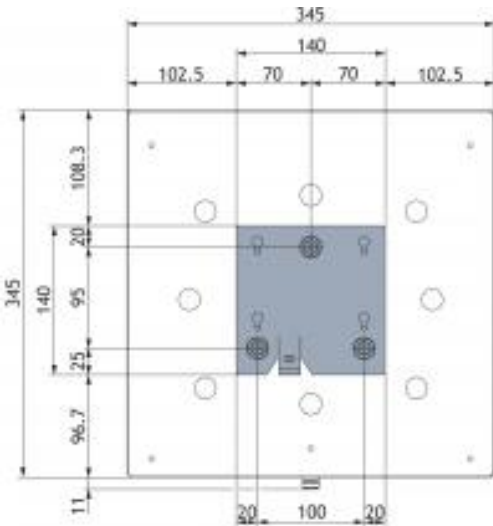
TYPICAL RADIATION PATTERN (E-PLANE)



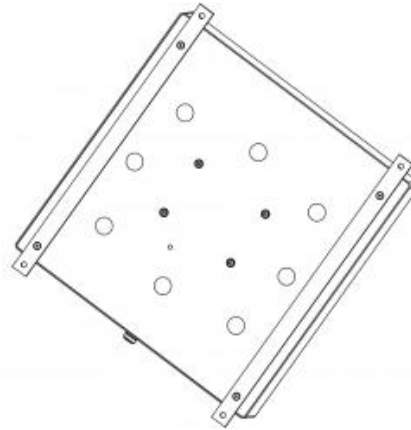
TYPICAL RADIATION PATTERN (H-PLANE)



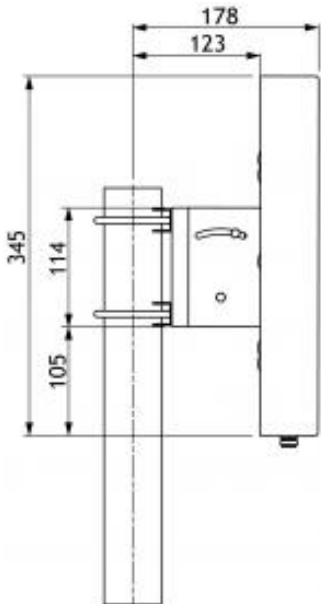
MOUNTING DETAILS (WALL MOUNTING BRACKET INCLUDED)



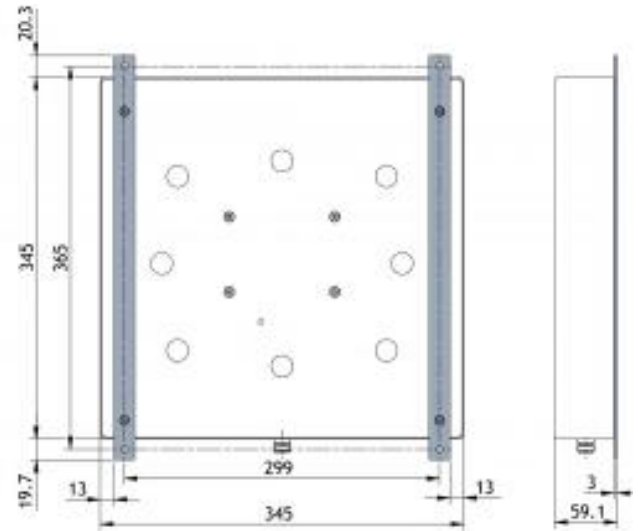
WALL MOUNTING BRACKET : PATCH-WAMO (ORDERED SEPARATELY)



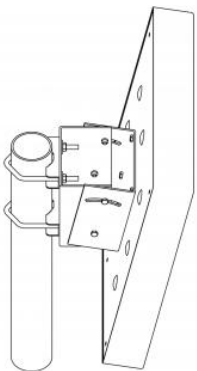
MOUNTING DETAILS (PATCH-MAMO)



MOUNTING DETAILS (PATCH-WAMO)



MAST MOUNTING BRACKET : PATCH-MAMO (ORDERED SEPARATELY)



Tilt adjustable from +5°/-30°

