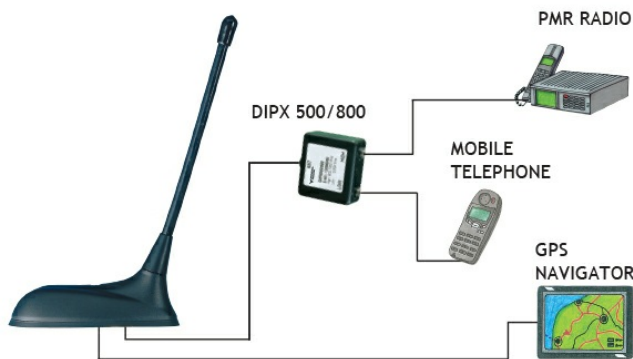


Unity Gain $\frac{1}{4}$ λ Mobile Antenna for the TETRA and EGSM Band

DESCRIPTION

- External antenna whip mounted on the GPS-Combi mount.
 - Flexible antenna made of steel wire covered with black silicone tubing.
 - Easily removable whip for cleaning in car-washing machine.
- GPS-antenna for fixed installations.
 - Full hemispherical coverage.
 - Built-in high gain, low noise amplifier.
 - Right-Hand Circularly Polarized antenna (RHCP).
 - 5 V supply voltage (3 V respectively 12 V available on request).
 - DC supply via RF-connector.
- When ordering the antenna, please state the centre frequency on each band.

CONNECTION DIAGRAM



SPECIFICATIONS

Electrical	
Model	GPS-C FLEX/TETRA/GSM
Frequency	380 - 430 MHz (TETRA) 880 - 960 MHz (EGSM)
Antenna Type	Mobile antenna
Max. Input Power	25 W
Polarisation	Vertical
Impedance	50 Ω
Gain	0 dB (acc. to EIA RS-329-1) for the TETRA band
VSWR	$\leq 1.7:1$ @ f. res.
Bandwidth	≥ 50 MHz @ VSWR ≤ 2.5

Mechanical	
Materials	Silicone tube over flexible bowden wire Chromed brass
Colour	Black
Height	Approx. 140 mm / 5.51 in.
Weight	Approx. 0.025 kg / 0.06 lb.
Mounting	On the GPS-Combi mount

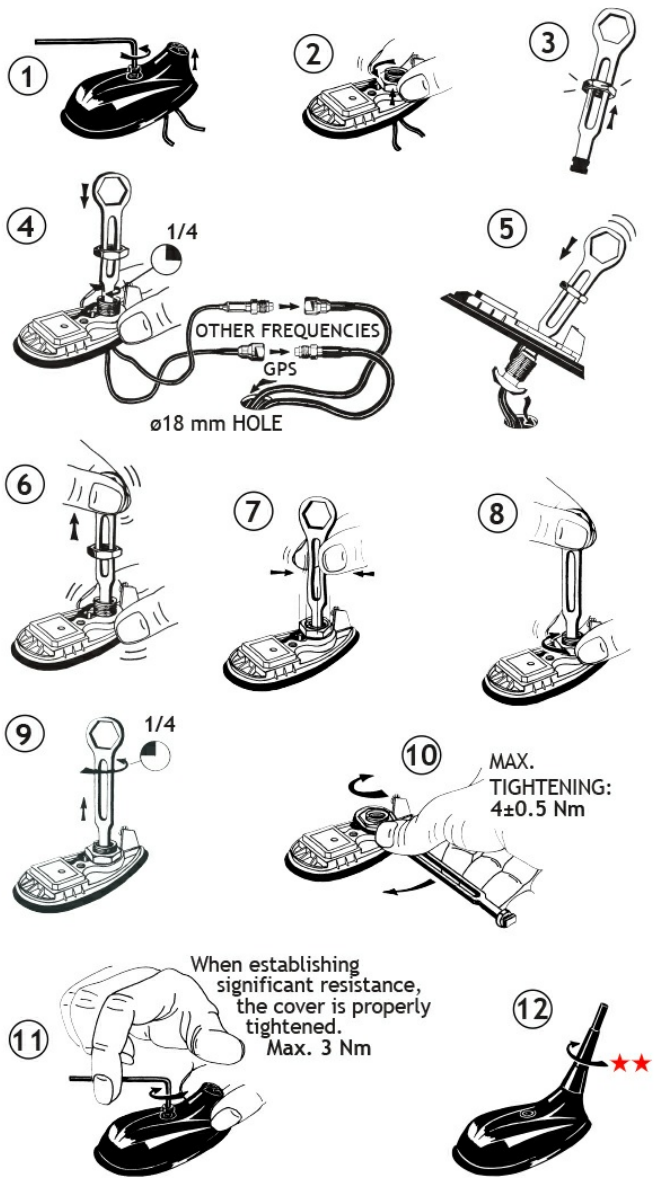


GPS Antenna	
P1dB (GPS Amplifier)	Approx. 7 dBm
Coverage (GPS)	Hemispherical
Gain (GPS)	28 dBc in axial direction (typ.)
Connection(s) (GPS)	FME(m) (male for GPS) + FME(f) (female for mobile antenna)
Mounting (GPS)	$\varnothing 18.0$ mm dia. hole for roof thickness up to 2.0 mm $\varnothing 18.5$ mm dia. hole for roof thickness 2.0 - 2.5 mm $\varnothing 19.0$ mm dia. hole for roof thickness 3.5 - 7.5 mm Tools for mounting included
Antenna Type (GPS)	Active patch antenna
Noise Figure (GPS Amplifier)	< 1 dB (typ.)
Cross Polar Discrimination (GPS)	> 10 dB (typ.)
Gain (GPS Amplifier)	> 30 dB (typ.)
VSWR (GPS Amplifier)	< 2.0:1
Operating Temperature Range (GPS)	-35 °C to +75 °C
Selectivity (GPS)	> 45 dB down @ ± 45 MHz
Installation Torque (GPS)	4 \pm 0.5 Nm
Frequency (GPS)	1575 MHz
Weight (GPS)	Approx. 0.114 kg / 0.25 lb.
Power Supply (Amplifier)	5 \pm 0.5 V DC (3 V resp. 12 V on request)
Current Consumption (GPS Amplifier)	0.025 mA
Dimensions (GPS)	Approx. 30 x 89 mm / 1.18 x 3.50 in.
Max. Roof Thickness (GPS)	2.5 mm or 3.5 - 7.5 mm / 0.10 in. or 0.14 - 0.30 in.
Colour (GPS)	Black
Polarisation (GPS)	Circular
Impedance (GPS)	50 Ω
Materials (GPS)	Cu-nite brass Stainless steel Reinforced thermoplastic

ORDERING

Model	Product No.	Description
GPS-C FLEX/TETRA/GSM	132000066	Max. Roof thickness 2.5 mm
GPS-C FLEX/TETRA/GSM/7 mm	132000169	Roof thickness : 3.5 - 7.5 mm

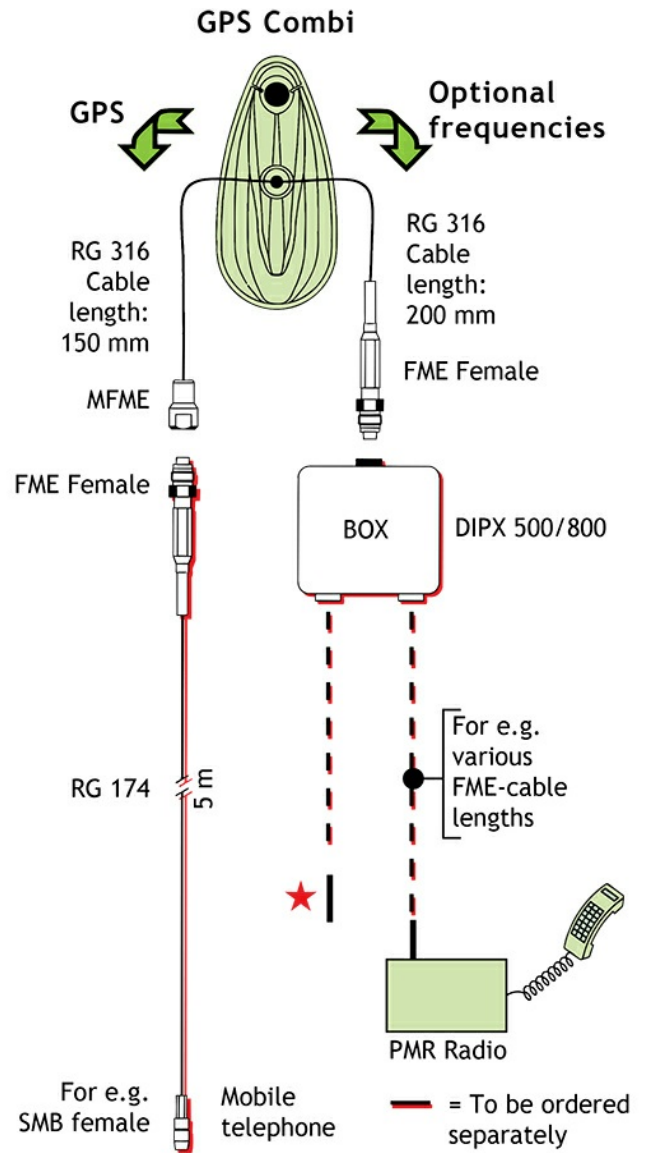
MOUNTING INSTRUCTION



★★ The whip should always be dismantled during car wash.

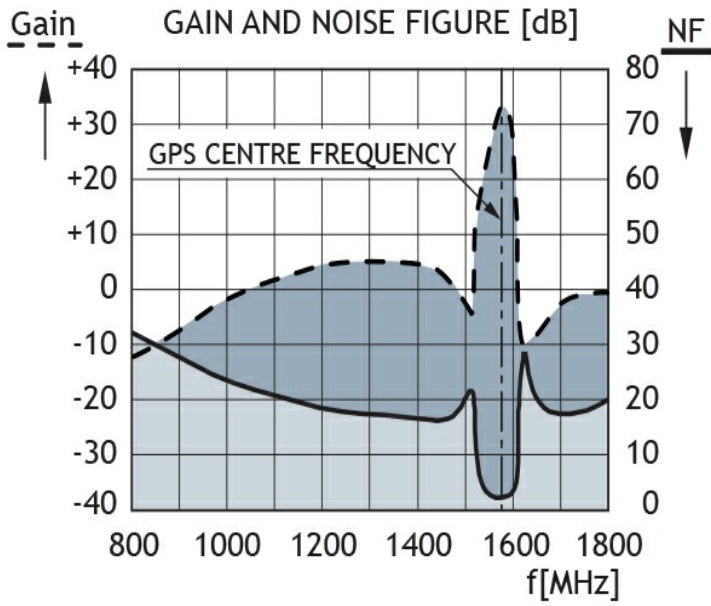
Do not use sealer on rubber gasket or other places.

CABLE MOUNTING

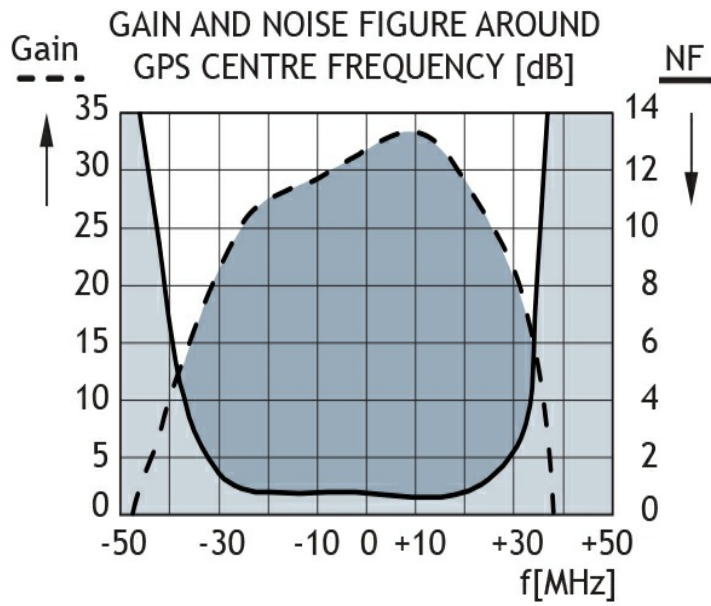
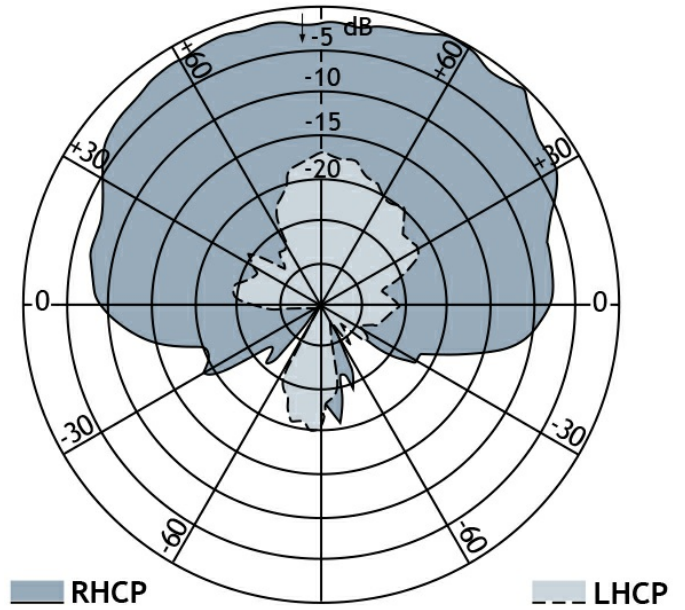


★ FME-Connector suitable for Mobile telephone in question.

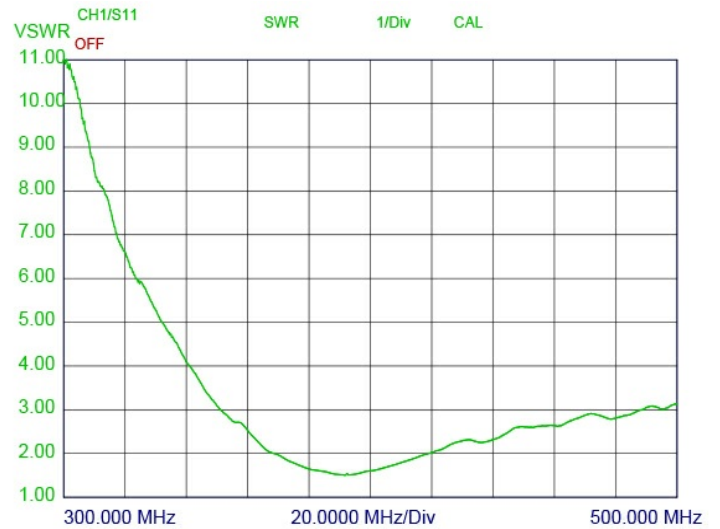
TYPICAL RESPONSE CURVES



VERTICAL RADIATION PATTERN



TYPICAL VSWR CURVE



EU AND UK DECLARATION OF CONFORMITY

Hereby Amphenol Procom declare that the product type GPS-C FLEX/TETRA/GSM is in compliance with EU Directive 2014/53/EU and the UK Radio Equipment Regulations 2017 (S.I. 2017 No. 1206). The full text of the Declaration of Conformity is available at:

<https://amphenolprocom.com/images/shop/catalog/pdf-for-catalogues/Declaration-of-Conformity-GPS-C-1.pdf>

